

AZIENDA VINICOLA CASTELLO COLLEMASSARI

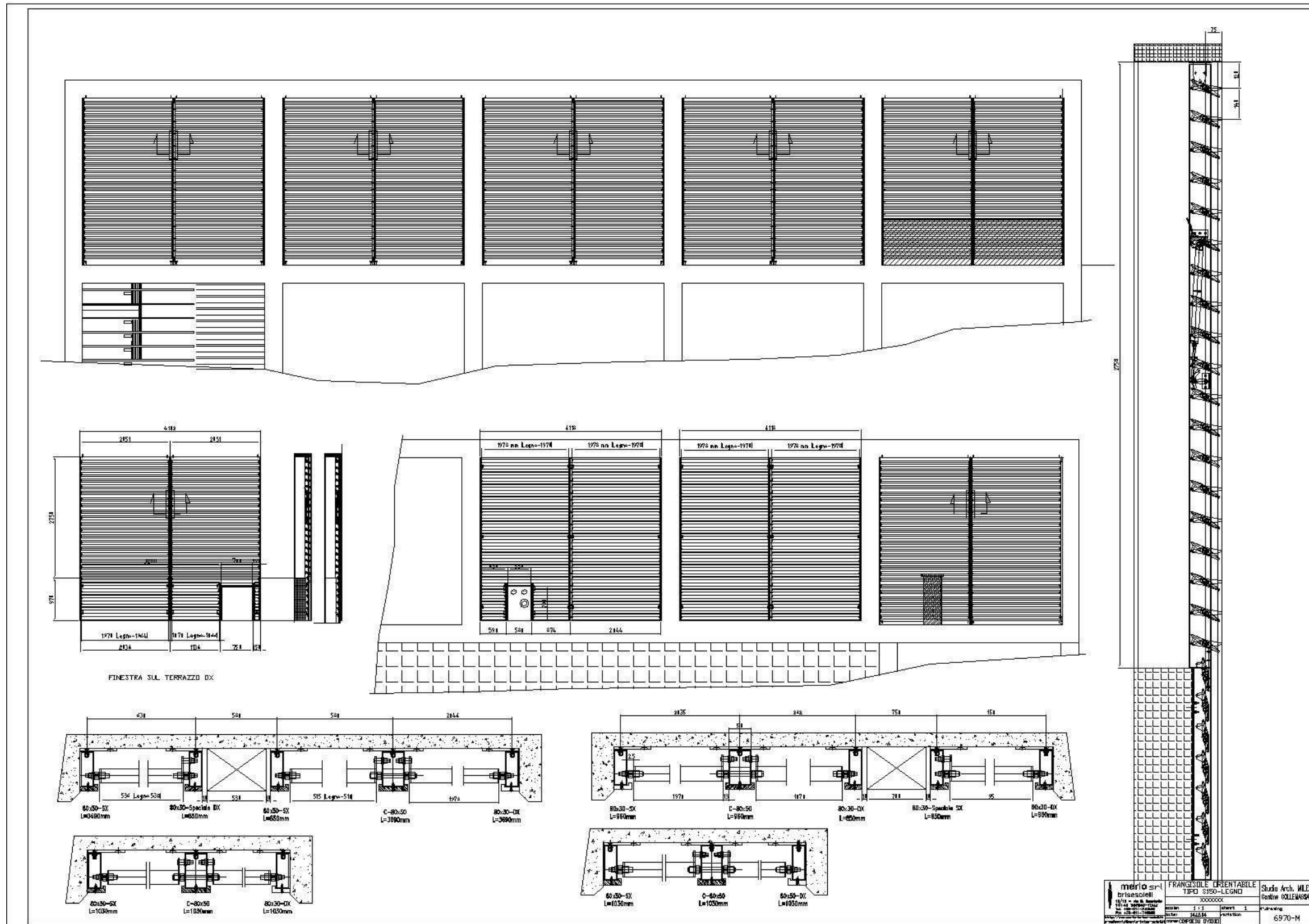
Place: CINIGIANO - GROSSETO
Client: AZIENDA VINICOLA CASTELLO COLLEMASSARI
Project manager: ARCHOS ENGINEERING – ARCH. MILESI
Year: 2005

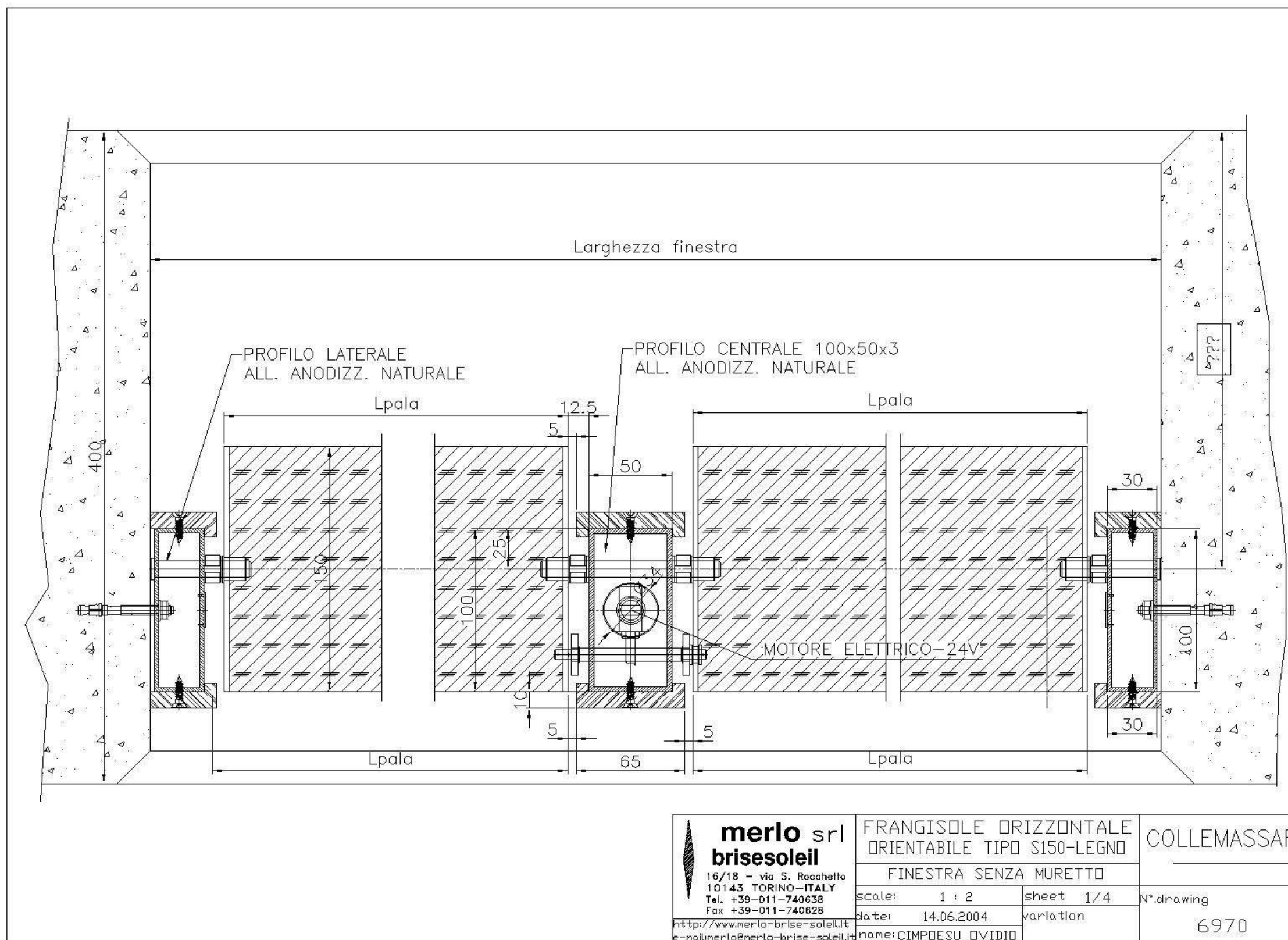
Description:

- Frangisole orizzontale orientabile, con pale tipo S da 150 mm di larghezza in cedro rosso del Canada, sistema di orientamento con motore interno ai montanti in alluminio sez. 100x50.
- Horizontal orientable sun louvre with blades type S 150 mm wide in red cedar of Canada, orientable system with motor into the aluminium profiles 100x50.
- Brise soleil horizontal orientable, avec lames type S 150 mm de largeur en bois cèdre rouge du Canada, orientable avec système de rotation à l'intérieur des profiles en alu sect. 100x50.









 merlo srl brise soleil 16/18 - via S. Rochetto 10143 TORINO-ITALY Tel. +39-011-740638 Fax +39-011-740628 http://www.merlo-brise-soleil.it e-mail:merlo-brise-soleil.it	FRANGISOLE DRIZZONTALE ORIENTABILE TIPO S150-LEGNO	COLLEMASSARI
	FINESTRA SENZA MURETTO	
scale: 1 : 2	sheet 1/4	N°.drawing
date: 14.06.2004	variation	6970
name: CIMPDESU OVIDIO		